

HUNTERS HOUSE

GLENTHAM

4 bed | 3 bath | 3 reception



THE NEW
HOMES
AGENT

thenewhomesagent.co.uk
enquiries@tnha.co.uk

+44 (0)1522 440 445


Scan me ▶
to see
full details
online



FLOOR PLANS

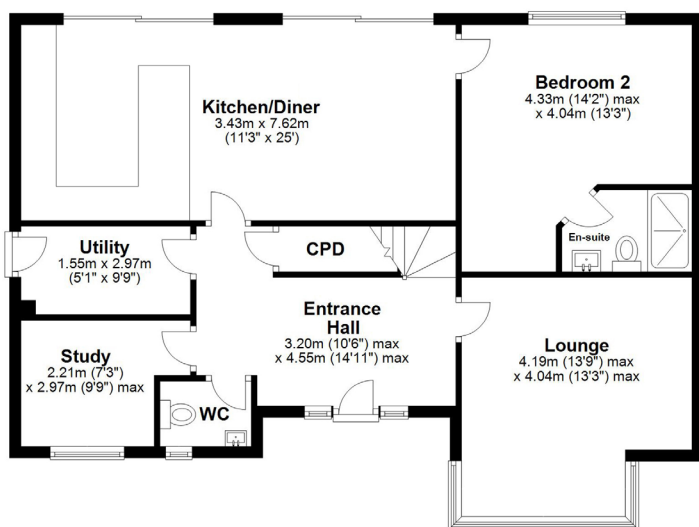
Ground Floor	Size (m)	Size (ft)
Entrance Hall	3.20m x 4.55m	10'6 x 14'11
WC	1.07m x 1.60m	3'6 x 5'3
Study	2.21m x 2.97m	7'3 x 9'9
Utility	1.55m x 2.97m	5'1 x 9'9
Kitchen / Diner	3.43m x 7.62m	11'3 x 25'0
Bedroom 2	4.33m x 4.04m	14'2 x 13'3
En-suite	2.23m x 1.43m	7'4 x 4'8
Lounge	4.19m x 4.04m	13'9 x 13'3

First Floor	Size (m)	Size (ft)
Galleried Landing		
Bedroom 1	4.04m x 4.11m	13'3 x 13'6
En-suite	3.00m x 1.96m	9'10 x 6'5
Walk-in Wardrobe	3.40m x 1.98m	11'2 x 6'6
Bedroom 3	2.84m x 4.19m	9'4 x 13'9
Bedroom 4	2.82m x 4.19m	9'3 x 13'9
Family Bathroom	1.68m x 2.57m	5'6 x 8'5

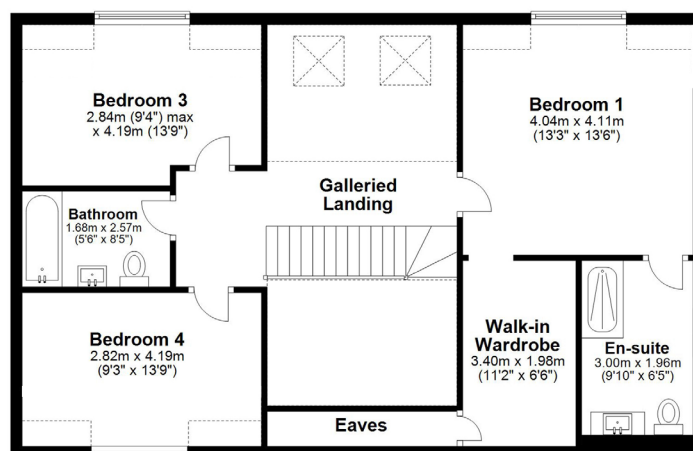
Scan me  to see video tour of neighbouring property, Arlas House, which is the same design as Hunters House



GROUND FLOOR



FIRST FLOOR



FLOOR PLANS ARE FOR LAYOUT GUIDANCE ONLY. NOT DRAWN TO SCALE UNLESS STATED. WINDOWS AND DOOR OPENINGS ARE APPROXIMATE. WHILST EVERY CARE IS TAKEN IN THE PREPARATION OF THESE PLANS, PLEASE CHECK ALL DIMENSIONS, SHAPES AND COMPASS BEARINGS, BEFORE MAKING ANY DECISIONS RELIANT UPON THEM.

a moving experience

ALL VIEWINGS ARE TO BE ORGANISED VIA THE NEW HOMES AGENT.

WHILST EVERY CARE HAS BEEN TAKEN TO PREPARE THESE SALES PARTICULARS, THEY ARE FOR GUIDANCE PURPOSES ONLY. ALL MEASUREMENTS ARE APPROXIMATE AND FOR GENERAL GUIDANCE PURPOSES ONLY AND WHILST EVERY CARE HAS BEEN TAKEN TO ENSURE THEIR ACCURACY, THEY SHOULD NOT BE RELIED UPON AND POTENTIAL BUYERS ARE ADVISED TO RECHECK THE MEASUREMENTS.